

DRAFT



THE SCHOOL BOARD OF BROWARD COUNTY, FLORIDA
PROPOSED
2018-2019 ORGANIZATIONAL CHART



THE SCHOOL BOARD OF BROWARD COUNTY, FLORIDA
PROPOSED 2018-2019 ORGANIZATIONAL CHART

DRAFT

School Board Appointed Committees & Public Stakeholders..... 1

Superintendent of Schools/General Counsel..... 2

Chief School Performance & Accountability Officer..... 3

Chief Academic Officer..... 4-7

 Early Learning & Language Acquisition..... 4

 Exceptional Student Learning Support..... 5

 Instruction & Interventions..... 6-7

Chief Student Support Initiatives..... 8

Chief Auditor..... 9

Chief Facilities Officer..... 10

Chief Financial Officer..... 11

Chief Human Resources & Equity Officer..... 12

Chief Information Officer..... 13

Chief Portfolio Services Officer..... 14

Chief Communications Officer..... 15

Chief of Staff..... 16

Chief Strategy & Operations Officer..... 17-18

 Business Support Center, Grants Administration, Strategic Implementation & Accountability..... 17

 Food & Nutrition Services, Procurement & Warehousing Services, Student Transportation & Fleet Services..... 18



SCHOOL BOARD APPOINTED COMMITTEES & PUBLIC STAKEHOLDERS

THE SCHOOL BOARD OF BROWARD COUNTY, FL
PROPOSED 2018-2019 ORGANIZATIONAL CHART

DRAFT

Legend

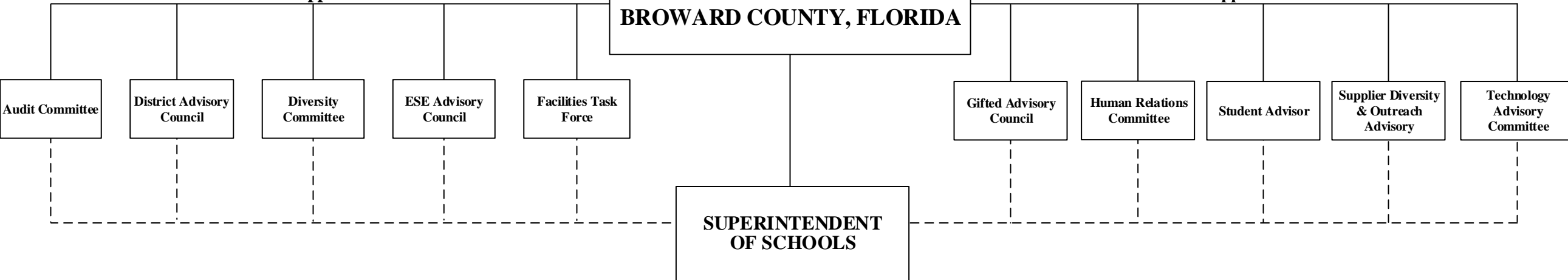
Funding from sources other than General Funds	New Position Job Description Exists N	Reporting Change from Different Division R
New Position Job Description Does Not Exist N ✓	Job Study on Existing Position J	Alignment Change with in same Division A
Revision to Existing Job Description/Title Change ✓	Funding: C Capital FS Food Service <u>Direct Report</u> G General Gr Grant <u>Indirect Report</u>	

**BROWARD COUNTY
COMMUNITY**

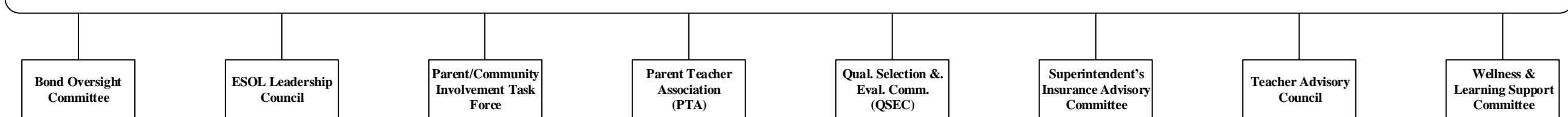
**THE SCHOOL BOARD OF
BROWARD COUNTY, FLORIDA**

School Board Appointed Committees

School Board Appointed Committees



PUBLIC STAKEHOLDERS





**THE SCHOOL BOARD OF BROWARD COUNTY, FL
PROPOSED 2018-2019 ORGANIZATIONAL CHART**

DRAFT

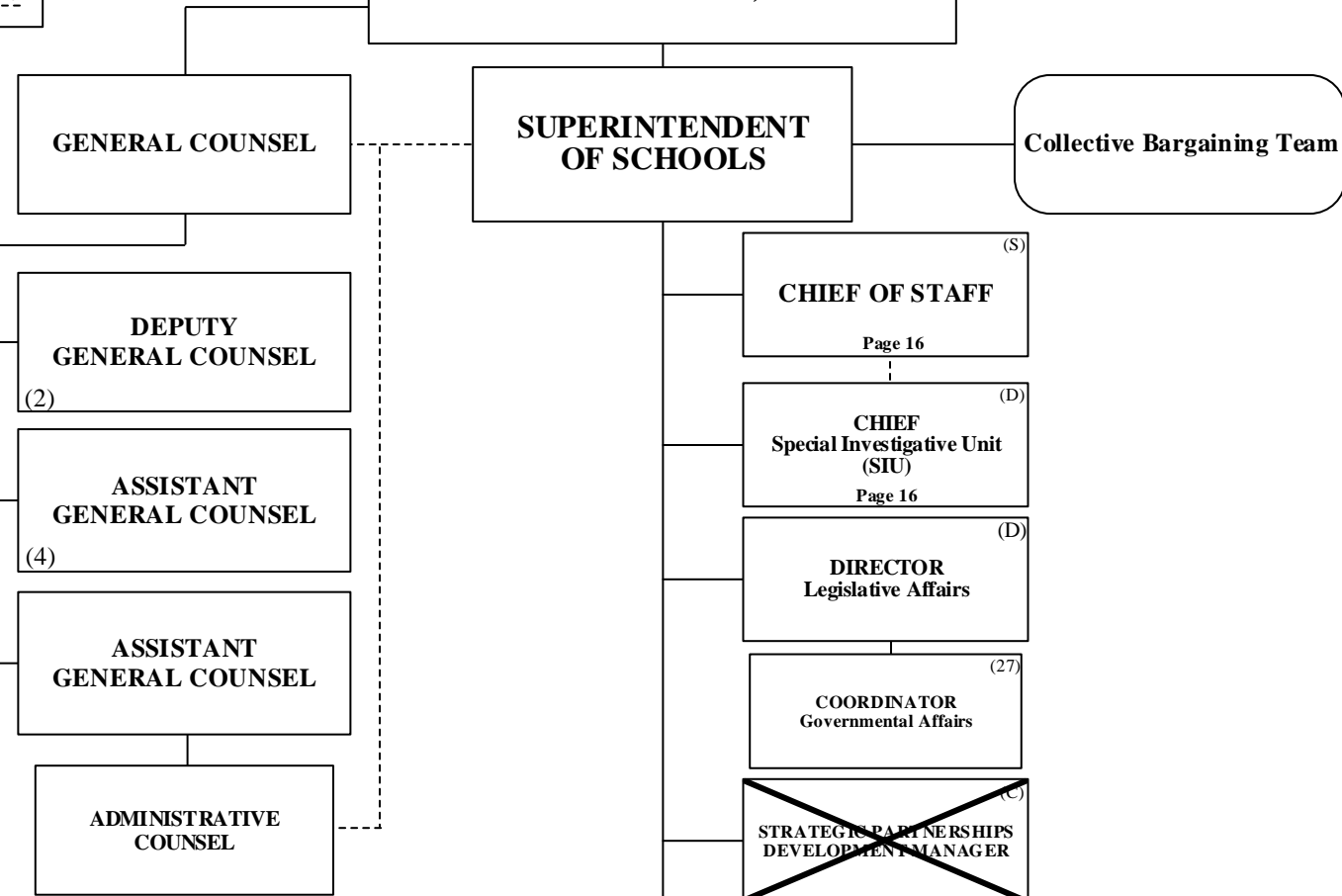
SUPERINTENDENT/GENERAL COUNSEL

**BROWARD COUNTY
COMMUNITY**

**THE SCHOOL BOARD OF
BROWARD COUNTY, FLORIDA**

Legend

Funding from sources other than General Funds	New Position Job Description Exists N	Reporting Change from Different Division R
New Position Job Description Does Not Exist N ✓	Job Study on Existing Position J	Alignment Change within same Division A
Revision to Existing Job Description/Title Change ✓	Funding: C Capital FS Food Service <u>Direct Report</u> G General Gr Grant <u>Indirect Report</u>	



- CHIEF SCHOOL PERFORMANCE & ACCOUNTABILITY OFFICER
Page 3
- CHIEF ACADEMIC OFFICER
Pages 4-7
- CHIEF STUDENT SUPPORT INITIATIVES
Page 8
- CHIEF AUDITOR
Page 9
- CHIEF FACILITIES OFFICER
Page 10
- CHIEF FINANCIAL OFFICER
Page 11
- CHIEF HUMAN RESOURCES & EQUITY OFFICER
Page 12
- CHIEF INFORMATION OFFICER
Page 13
- CHIEF PORTFOLIO SERVICES OFFICER
Page 14
- CHIEF COMMUNICATIONS PUBLIC INFORMATION OFFICER
Page 15
- CHIEF STRATEGY & OPERATIONS OFFICER
Pages 17-18



**THE SCHOOL BOARD OF BROWARD COUNTY, FL
PROPOSED 2018-2019 ORGANIZATIONAL CHART**

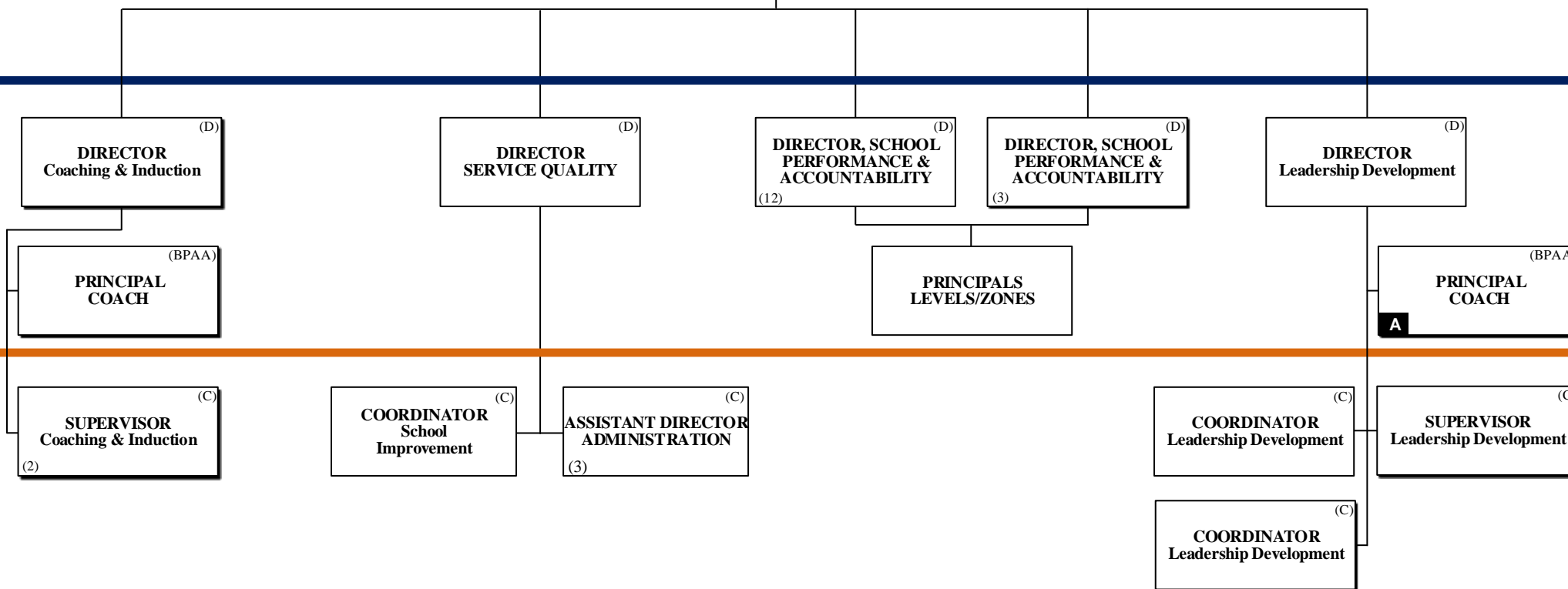
DRAFT

**SCHOOL PERFORMANCE & ACCOUNTABILITY
OSPA**

THE SCHOOL BOARD OF BROWARD COUNTY, FLORIDA

SUPERINTENDENT OF SCHOOLS

CHIEF SCHOOL PERFORMANCE & ACCOUNTABILITY OFFICER (S)



PAY BANDS 'S' & 'E'

PAY BAND 'D'

PAY BANDS 'C' & 'B'

Legend

Funding from sources other than General Funds	New Position Job Description Exists N	Reporting Change from Different Division R
New Position Job Description Does Not Exist N ✓	Job Study on Existing Position J	Alignment Change with in same Division A
Revision to Existing Job Description/Title Change ✓	Funding: C Capital FS Food Service <u>Direct Report</u> G General Gr Grant <u>Indirect Report</u>	

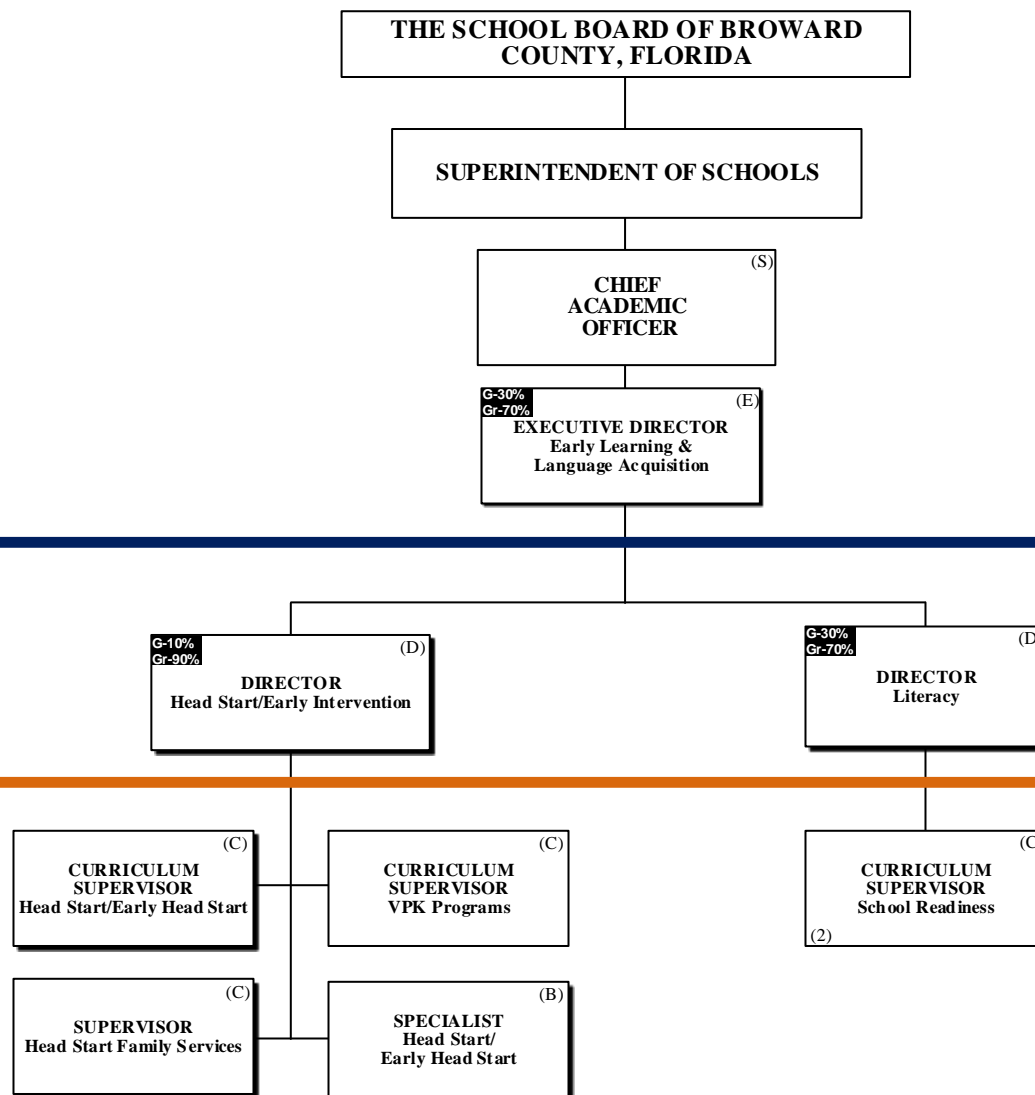


DRAFT

**ACADEMICS
EARLY LEARNING & LANGUAGE ACQUISITION**

Legend

Funding from sources other than General Funds	New Position Job Description Exists N	Reporting Change from Different Division R
New Position Job Description Does Not Exist N ✓	Job Study on Existing Position J	Alignment Change with in same Division A
Revision to Existing Job Description/Title Change ✓	Funding: C Capital FS Food Service <u>Direct Report</u> G General Gr Grant <u>Indirect Report</u>	



PAY BANDS 'S' & 'E'

PAY BAND 'D'

PAY BANDS 'C' & 'B'

ACADEMICS EXCEPTIONAL STUDENT LEARNING SUPPORT



**THE SCHOOL BOARD OF BROWARD COUNTY, FL
PROPOSED 2018-2019 ORGANIZATIONAL CHART**

DRAFT

Legend

Funding from sources other than General Funds N	New Position Job Description Exists N	Reporting Change from Different Division R
New Position Job Description Does Not Exist N ✓	Job Study on Existing Position A	Alignment Change with in same Division A
Funding:		
Revision to Existing Job Description/Title Change ✓	C Capital FS Food Service <u>Direct Report</u>	G General Gr Grant <u>Indirect Report</u>

THE SCHOOL BOARD OF BROWARD COUNTY, FLORIDA

SUPERINTENDENT OF SCHOOLS

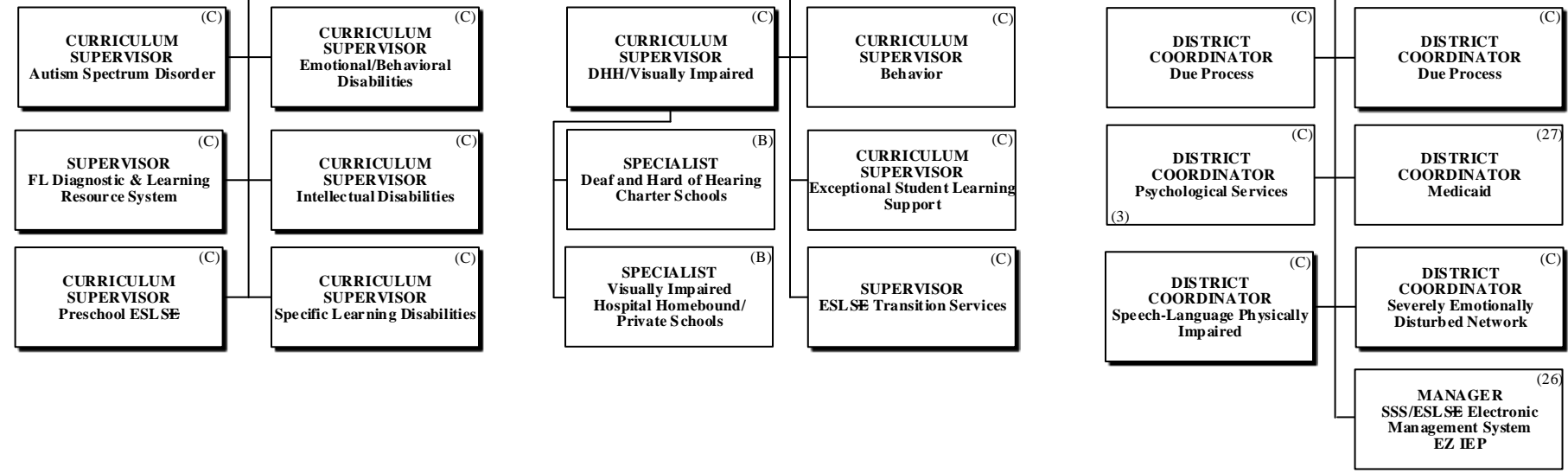
CHIEF ACADEMIC OFFICER ^(S)

EXECUTIVE DIRECTOR ^(E)
Exceptional Student Learning Support

PAY BANDS 'S' & 'E'

DIRECTOR ^(D) Exceptional Student Learning Support (Pre-K/Elementary)
 DIRECTOR ^(D) Exceptional Student Learning Support (Secondary)
 DIRECTOR ^(D) Exceptional Student Learning Support Services

PAY BAND 'D'



PAY BANDS 'C' & 'B'



THE SCHOOL BOARD OF BROWARD COUNTY, FL
PROPOSED 2018-2019 ORGANIZATIONAL CHART

DRAFT

**ACADEMICS
 INSTRUCTION & INTERVENTIONS**

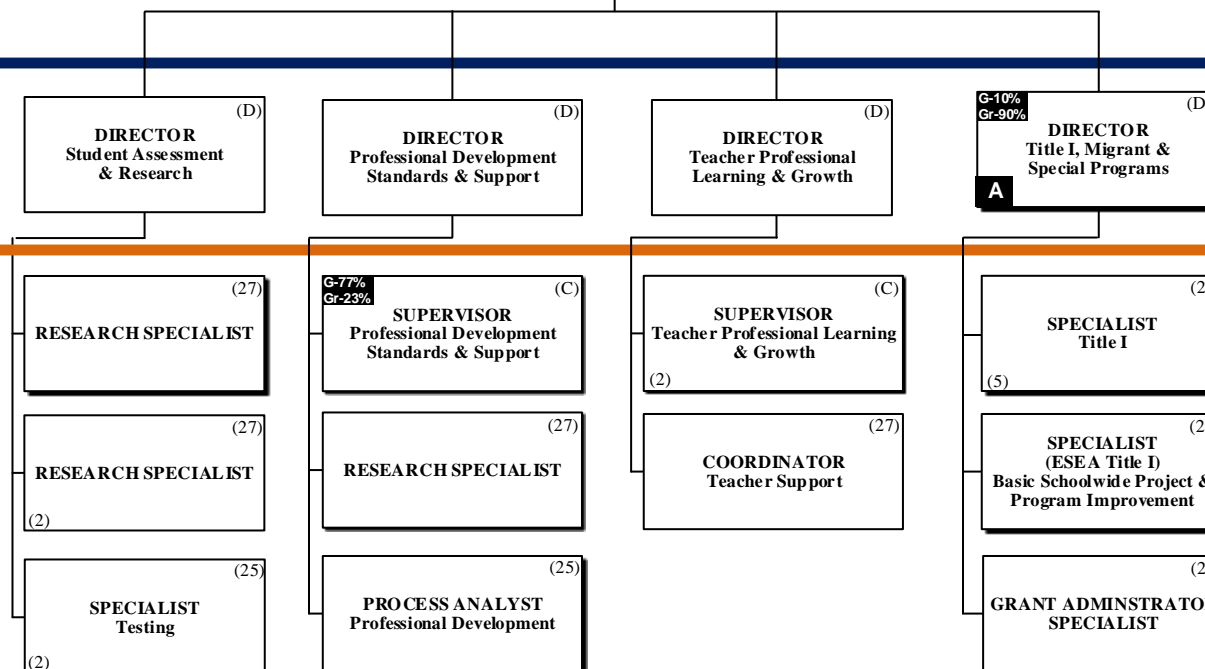
THE SCHOOL BOARD OF BROWARD COUNTY, FLORIDA

SUPERINTENDENT OF SCHOOLS

CHIEF ACADEMIC OFFICER (S)

Legend

Funding from sources other than General Funds	New Position Job Description Exists N	Reporting Change from Different Division R
New Position Job Description Does Not Exist N ✓	Job Study on Existing Position J	Alignment Change within same Division A
Revision to Existing Job Description/Title Change ✓	Funding: C Capital FS Food Service <u>Direct Report</u> G General Gr Grant <u>Indirect Report</u>	



PAY BANDS 'S' & 'E'

PAY BAND 'D'

PAY BANDS 'C' & 'B'



ACADEMICS INSTRUCTION & INTERVENTIONS

THE SCHOOL BOARD OF BROWARD COUNTY, FL
PROPOSED 2018-2019 ORGANIZATIONAL CHART

DRAFT

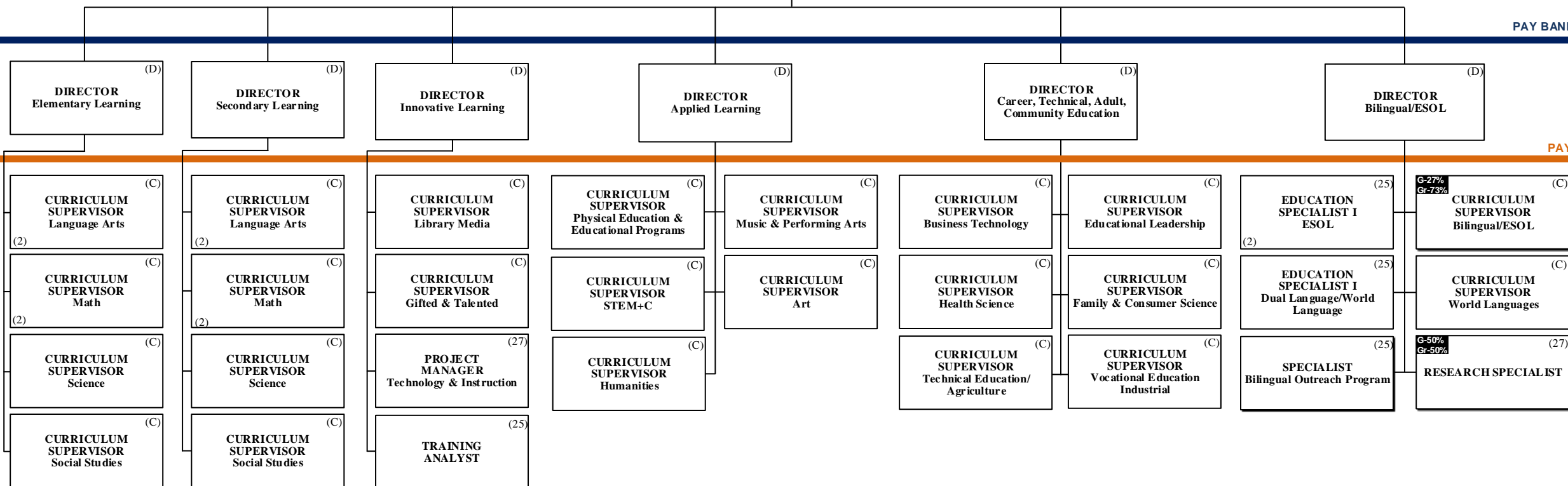
Legend

Funding from sources other than General Funds	New Position Job Description Exists N	Reporting Change from Different Division R
New Position Job Description Does Not Exist N ✓	Job Study on Existing Position J	Alignment Change with in same Division A
Revision to Existing Job Description/Title Change ✓	Funding: C Capital FS Food Service <u>Direct Report</u> G General Gr Grant <u>Indirect Report</u>	

THE SCHOOL BOARD OF BROWARD COUNTY, FLORIDA

SUPERINTENDENT OF SCHOOLS

CHIEF ACADEMIC OFFICER (S)



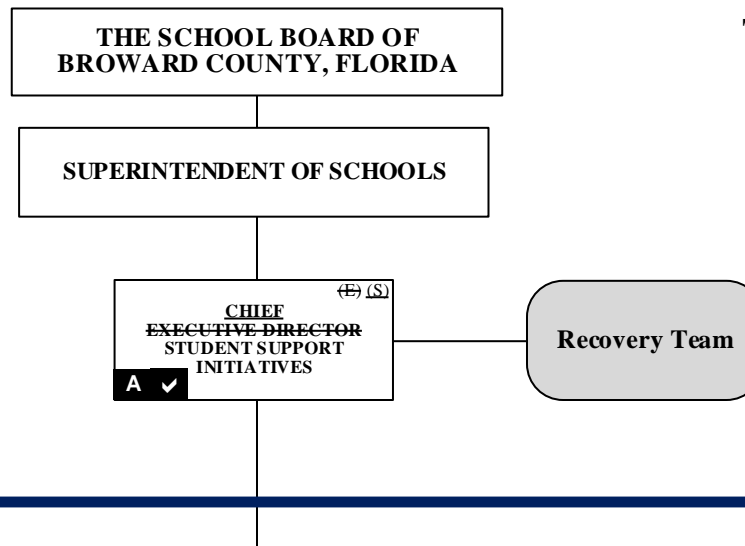


STUDENT SUPPORT INITIATIVES

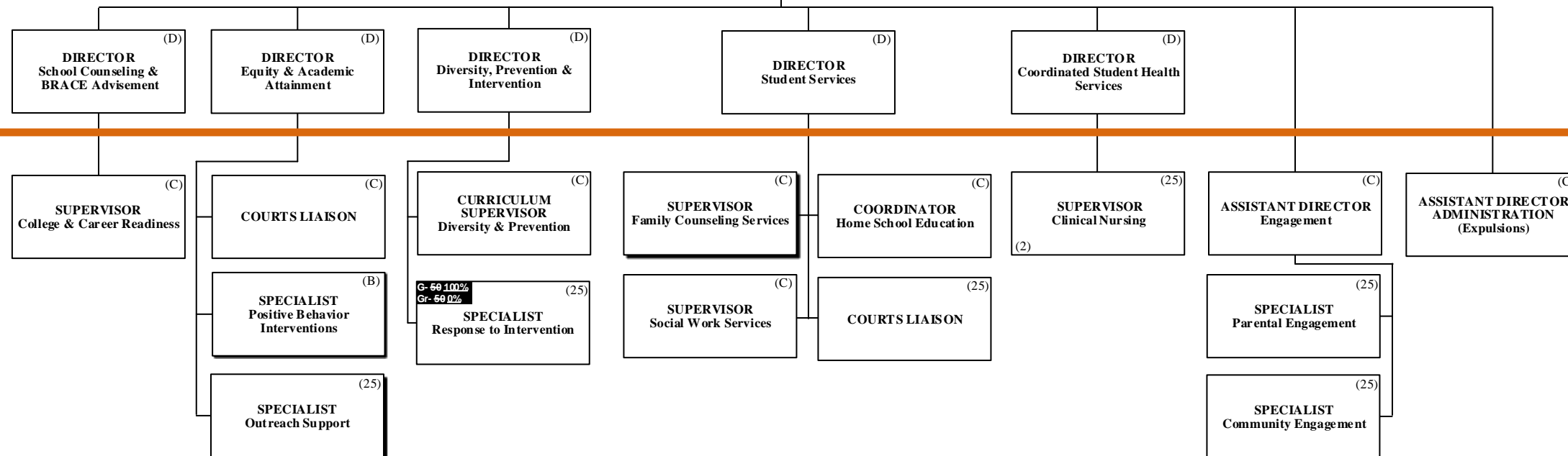
THE SCHOOL BOARD OF BROWARD COUNTY, FL
PROPOSED 2018-2019 ORGANIZATIONAL CHART

DRAFT

Legend	
Funding from sources other than General Funds	New Position Job Description Exists N
New Position Job Description Does Not Exist N	Reporting Change from Different Division R
Job Study on Existing Position J	Alignment Change with in same Division A
Revision to Existing Job Description/Title Change ✓	
Funding:	
C Capital	FS Food Service
G General	Gr Grant
FS Food Service	Direct Report
Gr Grant	Indirect Report



PAY BANDS 'S' & 'E'



PAY BAND 'D'

PAY BANDS 'C' & 'E'

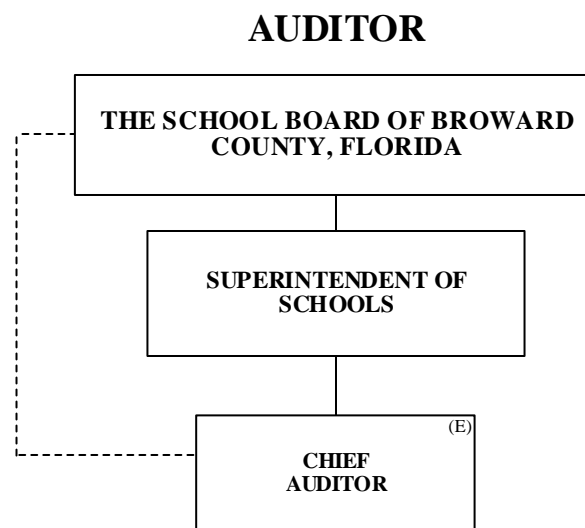


THE SCHOOL BOARD OF BROWARD COUNTY, FL
PROPOSED 2018-2019 ORGANIZATIONAL CHART

DRAFT

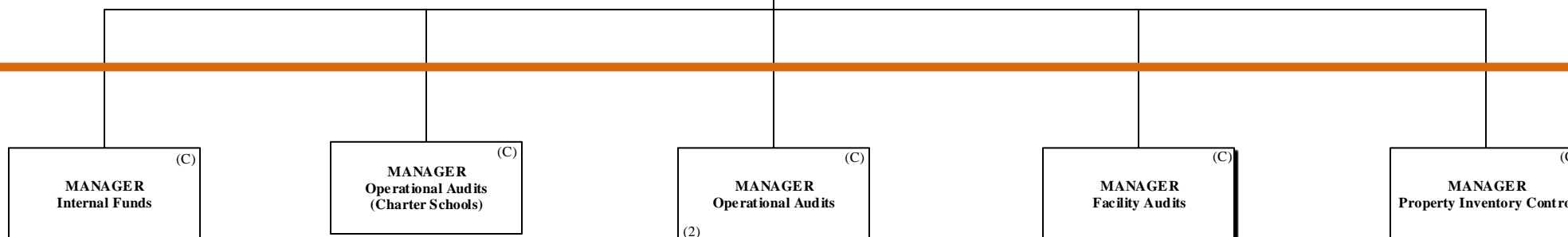
Legend

Funding from sources other than General Funds	New Position Job Description Exists N	Reporting Change from Different Division R
New Position Job Description Does Not Exist N ✓	Job Study on Existing Position J	Alignment Change within same Division A
Revision to Existing Job Description/Title Change ✓	Funding: C Capital FS Food Service <u>Direct Report</u> G General Gr Grant <u>Indirect Report</u>	



PAY BANDS 'S' & 'E'

PAY BAND 'D'



PAY BANDS 'C' & 'B'



FACILITIES

THE SCHOOL BOARD OF BROWARD COUNTY, FLORIDA

SUPERINTENDENT OF SCHOOLS

CHIEF FACILITIES OFFICER (S)

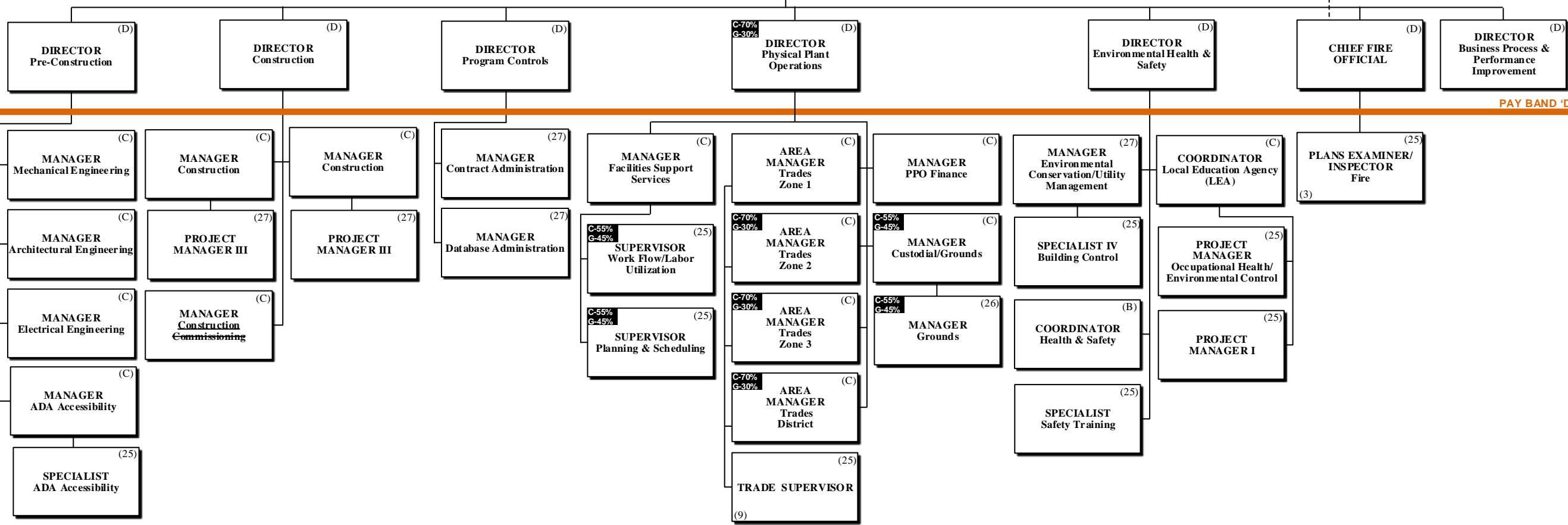
THE SCHOOL BOARD OF BROWARD COUNTY, FL
PROPOSED 2018-2019 ORGANIZATIONAL CHART

DRAFT

PAY BANDS 'S' & 'E'

Legend

Funding from sources other than General Funds	New Position Job Description Exists N	Reporting Change from Different Division R
New Position Job Description Does Not Exist N ✓	Job Study on Existing Position J	Alignment Change within same Division A
Revision to Existing Job Description/Title Change ✓	Funding: C Capital FS Food Service <u>Direct Report</u> G General Gr Grant <u>Indirect Report</u>	



PAY BAND 'D'

ESMAB PAY BANDS 'C' & 'B'
TSP PAY GRADES 25-28



THE SCHOOL BOARD OF BROWARD COUNTY, FL
PROPOSED 2018-2019 ORGANIZATIONAL CHART

DRAFT

FINANCIAL MANAGEMENT

THE SCHOOL BOARD OF BROWARD COUNTY, FLORIDA

SUPERINTENDENT OF SCHOOLS

C-20%
G-80%
CHIEF FINANCIAL OFFICER (CFO) (S)

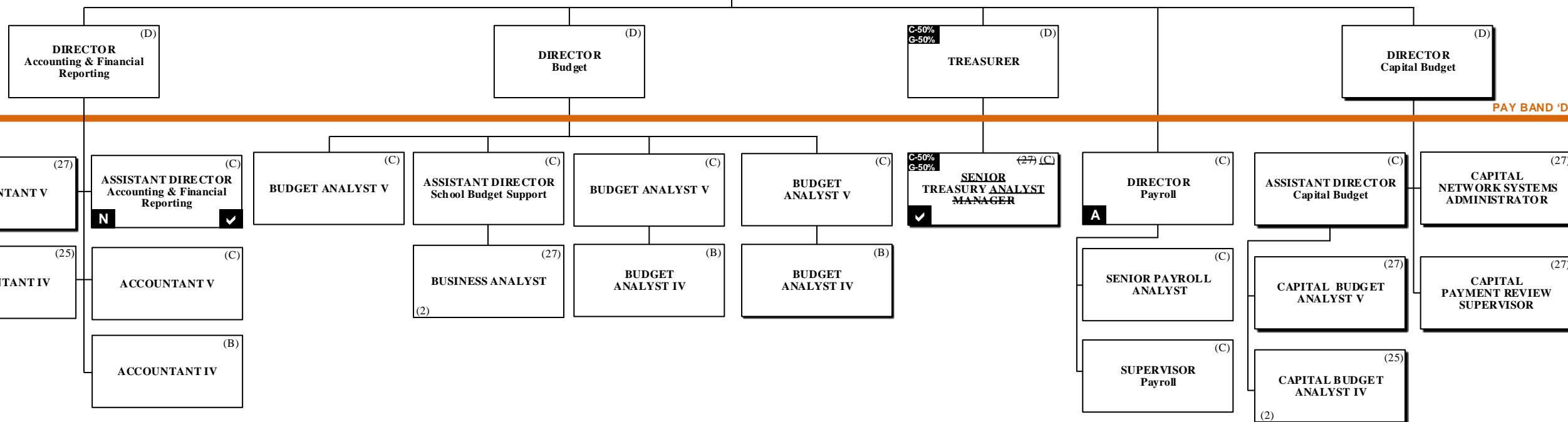
Legend

Funding from sources other than General Funds	New Position Job Description Exists N	Reporting Change from Different Division R
New Position Job Description Does Not Exist N ✓	Job Study on Existing Position J	Alignment Change with in same Division A
Revision to Existing Job Description/Title Change ✓	Funding: C Capital FS Food Service <u>Direct Report</u> G General Gr Grant <u>Indirect Report</u>	

PAY BANDS 'S' & 'E'

PAY BAND 'D'

ESMAB PAY BANDS 'C' & 'B'
TSP PAY GRADES 25-28



HUMAN RESOURCES & EQUITY



THE SCHOOL BOARD OF BROWARD COUNTY, FL
PROPOSED 2018-2019 ORGANIZATIONAL CHART

DRAFT

THE SCHOOL BOARD OF BROWARD COUNTY, FLORIDA

SUPERINTENDENT OF SCHOOLS

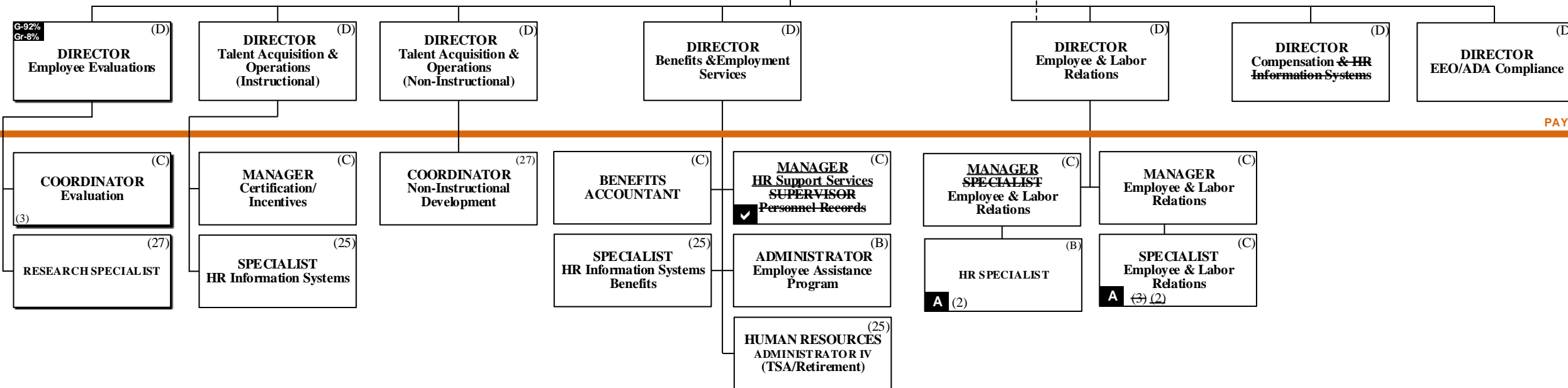
CHIEF HUMAN RESOURCES & EQUITY OFFICER (S)

Collective Bargaining

Legend

Funding from sources other than General Funds	New Position Job Description Exists N	Reporting Change from Different Division R
New Position Job Description Does Not Exist N ✓	Job Study on Existing Position J	Alignment Change within same Division A
Revision to Existing Job Description/Title Change ✓	Funding: C Capital FS Food Service <u>Direct Report</u> G General Gr Grant <u>Indirect Report</u>	

PAY BANDS 'S' & 'E'



PAY BAND 'D'

ESMAB PAY BANDS 'C' & 'B'
 TSP/PBA PAY GRADES 25-28



INFORMATION & TECHNOLOGY

THE SCHOOL BOARD OF BROWARD COUNTY, FL
PROPOSED 2018-2019 ORGANIZATIONAL CHART

DRAFT

Legend

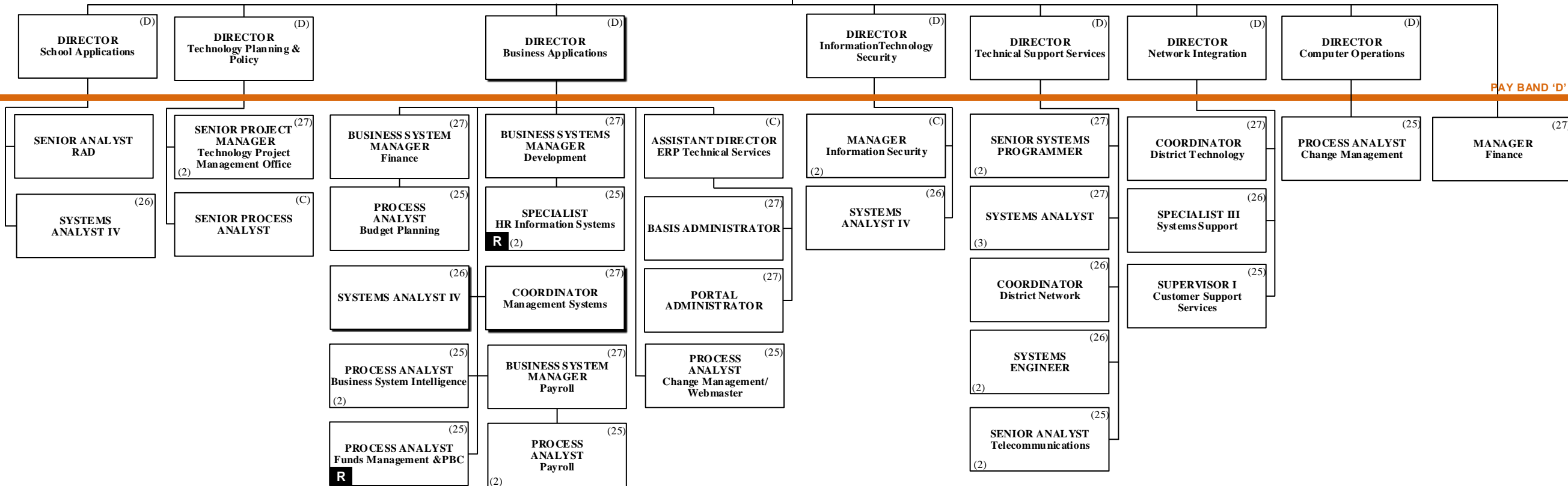
Funding from sources other than General Funds	New Position Job Description Exists N	Reporting Change from Different Division R
New Position Job Description Does Not Exist N ✓	Job Study on Existing Position J	Alignment Change within same Division A
Revision to Existing Job Description/Title Change ✓	Funding: C Capital FS Food Service <u>Direct Report</u> G General Gr Grant <u>Indirect Report</u>	

THE SCHOOL BOARD OF BROWARD COUNTY, FLORIDA

SUPERINTENDENT OF SCHOOLS

CHIEF INFORMATION OFFICER (S)

PAY BANDS 'S' & 'E'



PAY BAND 'D'

ESMAB PAY BANDS 'C' & 'B'
 TSP PAY GRADES 25-28



**THE SCHOOL BOARD OF BROWARD COUNTY, FL
PROPOSED 2018-2019 ORGANIZATIONAL CHART**

DRAFT

Legend

Funding from sources other than General Funds	New Position Job Description Exists N	Reporting Change from Different Division R
New Position Job Description Does Not Exist N ✓	Job Study on Existing Position J	Alignment Change with in same Division A
Revision to Existing Job Description/Title Change ✓	Funding: C Capital FS Food Service <u>Direct Report</u> G General Gr Grant <u>Indirect Report</u>	

PORTFOLIO SERVICES

THE SCHOOL BOARD OF BROWARD COUNTY, FLORIDA

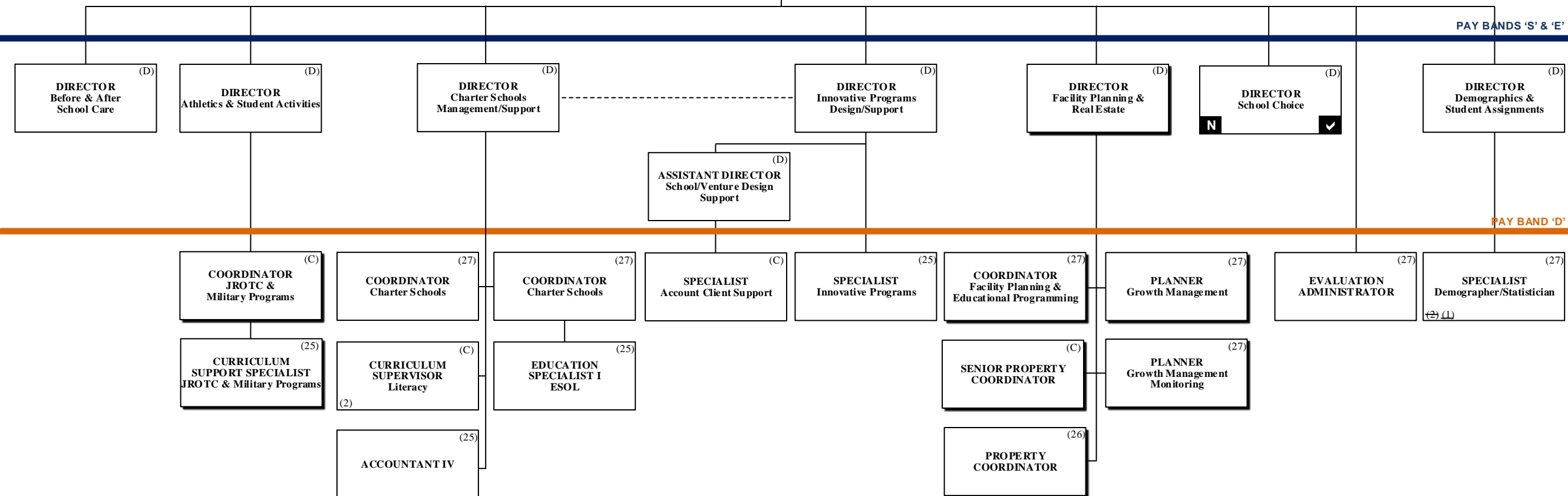
SUPERINTENDENT OF SCHOOLS

CHIEF PORTFOLIO SERVICES OFFICER

PAY BANDS 'S' & 'E'

PAY BAND 'D'

ESMAB PAY BANDS 'C' & 'B'
TSP PAY GRADES 25-28



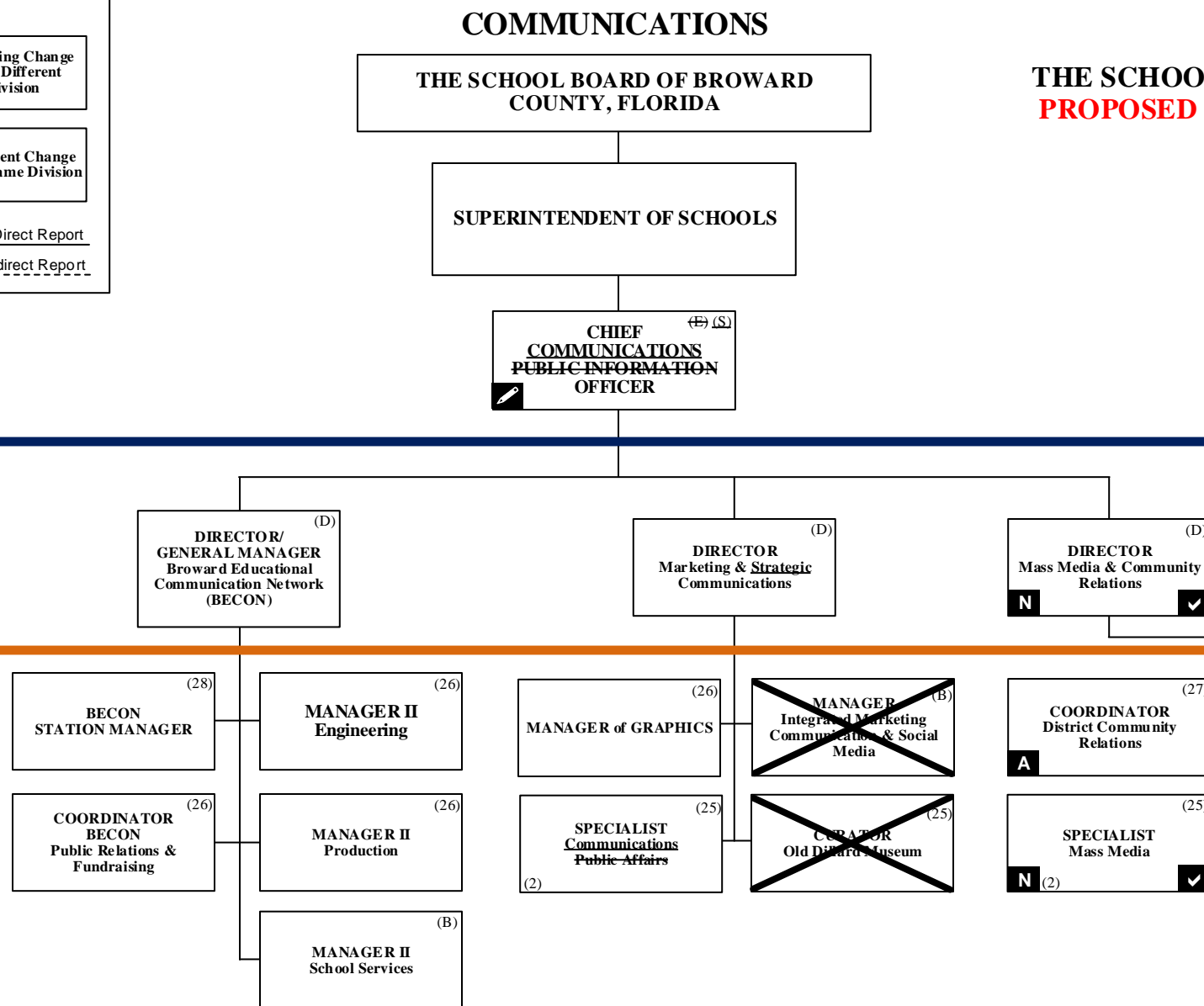


THE SCHOOL BOARD OF BROWARD COUNTY, FL
PROPOSED 2018-2019 ORGANIZATIONAL CHART

DRAFT

Legend

Funding from sources other than General Funds	New Position Job Description Exists N	Reporting Change from Different Division R
New Position Job Description Does Not Exist N ✓	Job Study on Existing Position J	Alignment Change within same Division A
Revision to Existing Job Description/Title Change ✓	Funding: C Capital FS Food Service <u>Direct Report</u> G General Gr Grant <u>Indirect Report</u>	



PAY BANDS 'S' & 'E'

PAY BAND 'D'

ESMAB PAY BANDS 'C' & 'B'
TSP PAY GRADES 25-28



CHIEF OF STAFF

THE SCHOOL BOARD OF BROWARD COUNTY, FLORIDA

THE SCHOOL BOARD OF BROWARD COUNTY, FL
PROPOSED 2018-2019 ORGANIZATIONAL CHART

DRAFT

Legend

Funding from sources other than General Funds	New Position Job Description Exists N	Reporting Change from Different Division R
New Position Job Description Does Not Exist N ✓	Job Study on Existing Position J	Alignment Change within same Division A
Revision to Existing Job Description/Title Change ✓	Funding:	
	C Capital	FS Food Service
	G General	Gr Grant
	Direct Report	
	Indirect Report	

SUPERINTENDENT OF SCHOOLS

CHIEF OF STAFF (S)

PAY BANDS 'S' & 'E'

DIRECTOR District Administrative Services (D) N ✓

CHIEF BUILDING OFFICIAL (D)

DIRECTOR Risk Management (D)

CHIEF Special Investigative Unit (SIU) (D)

MAJOR SIU Operations/ Investigations (D)

PAY BAND 'D'

ASSISTANT CHIEF BUILDING OFFICIAL Inspections (27)

SENIOR ENGINEER (27)

ASSISTANT CHIEF BUILDING OFFICIAL Plans (27) N

MANAGER Emergency Management (B)

PROGRAM ADMINISTRATOR Workers Compensation (C)

PERSONNEL ADMINISTRATOR Professional Standards (C)

DETECTIVE SIU (Schools - 11) (Personnel - 9) (20)

SCHOOL SAFETY COORDINATOR (25)

PLANS EXAMINER/INSPECTOR Building (25) (4)

PLANS EXAMINER/INSPECTOR Plumbing (25) (2)

SENIOR PLANS EXAMINER (26) A

MANAGER Workers Compensation Claims (C)

MANAGER Workers Compensation Medical Consumerism (C)

MANAGER Workers Compensation Information Analytics (B)

PLANS EXAMINER/INSPECTOR Mechanical (25) (2)

PLANS EXAMINER/INSPECTOR Electrical (25) (2)

SENIOR PLANS EXAMINER Mechanical Structural (26) A

SUPERVISOR Workers Compensation Claims (B)

SUPERVISOR Workers Compensation Medical Case Management (B)

SPECIALIST Workers Compensation Stay-at-Work/Return-to-Work (B)

PLANS EXAMINER/INSPECTOR Roofing (25) (2)

ADJUSTER Workers Compensation Claims (B) (8)

CASE MANAGER Workers Compensation Medical Case (B) (8)

Revisions to the SIU organization will be forthcoming pending the current active assessment effort regarding district safety and security needs

ESMAB PAY BANDS 'C' & 'B'
TSP PAY GRADES 25-28



**THE SCHOOL BOARD OF BROWARD COUNTY, FL
PROPOSED 2018-2019 ORGANIZATIONAL CHART**

DRAFT

Legend

Funding from sources other than General Funds	New Position Job Description Exists N	Reporting Change from Different Division R
New Position Job Description Does Not Exist N ✓	Job Study on Existing Position J	Alignment Change within same Division A
Revision to Existing Job Description/Title Change ✓	Funding: C Capital FS Food Service <u>Direct Report</u> G General Gr Grant <u>Indirect Report</u>	

STRATEGY & OPERATIONS

THE SCHOOL BOARD OF BROWARD COUNTY, FLORIDA

SUPERINTENDENT OF SCHOOLS

CHIEF STRATEGY & OPERATIONS OFFICER (S)

EXECUTIVE DIRECTOR (E)
Strategic Initiative Management

DIRECTOR (D)
Business Support Center

DIRECTOR (D)
Grants Administration

DIRECTOR (D)
Performance Management

DIRECTOR (D)
Program Evaluation

MANAGER (27)
Budget

BUSINESS ANALYST (27)
(2)

SUPERVISOR I (26)
Printing Services

SENIOR MANAGER (C)
Grant Programs

MANAGER (26)
Grant Programs Oversight
(2)

GRANTS ADMINISTRATOR (25)
Accountability & Reporting

COORDINATOR (C)
Performance Management

COORDINATOR (C)
Strategic Management

EVALUATION ADMINISTRATOR (27)

PAY BANDS 'S' & 'E'

PAY BAND 'D'

ESMAB PAY BANDS 'C' & 'B'
TSP PAY GRADES 25-28



THE SCHOOL BOARD OF BROWARD COUNTY, FL
PROPOSED 2018-2019 ORGANIZATIONAL CHART

DRAFT

STRATEGY & OPERATIONS

THE SCHOOL BOARD OF BROWARD COUNTY, FLORIDA

SUPERINTENDENT OF SCHOOLS

CHIEF STRATEGY & OPERATIONS OFFICER (S)

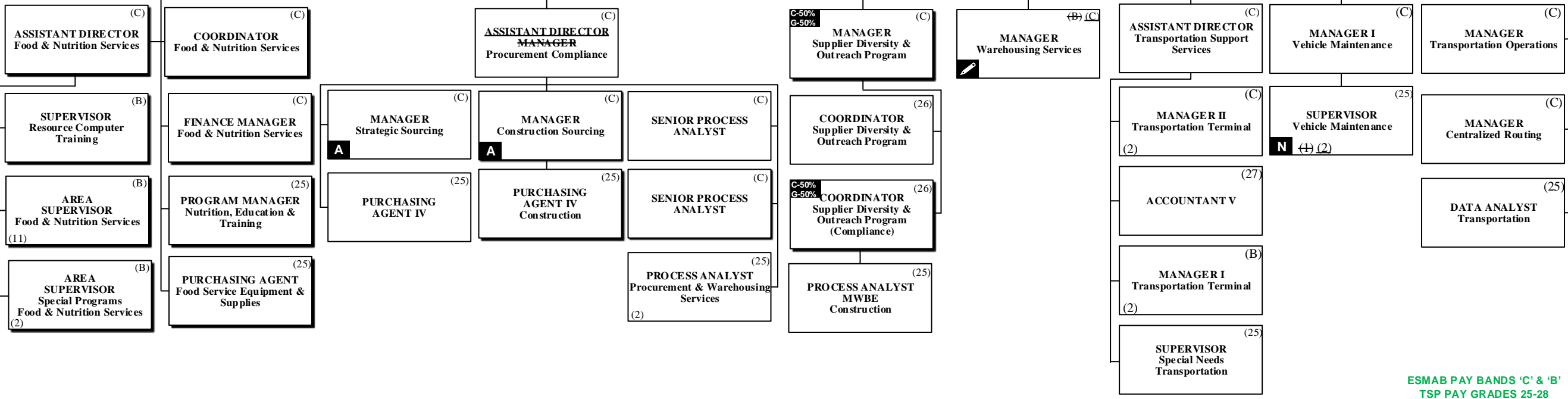
EXECUTIVE DIRECTOR Student Transportation & Fleet Services (+)(E)

PAY BANDS 'S' & 'E'

DIRECTOR Food & Nutrition Services (D)

DIRECTOR Procurement & Warehousing Services (D)

PAY BAND 'D'



ESMAB PAY BANDS 'C' & 'B'
TSP PAY GRADES 25-28